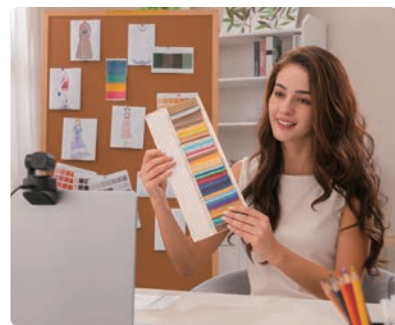




Stay Pro, Stay Productive

Maintaining best-in-class image quality, OBSBOT Tiny 2 Lite has now arrived at a worthy price, with industry-advanced AI features, and brand new productive Preset Modes. Experience a seamless journey with Tiny 2 Lite. Your workflow will be more professional and productive than ever before.



Hybrid Working



Game Streaming



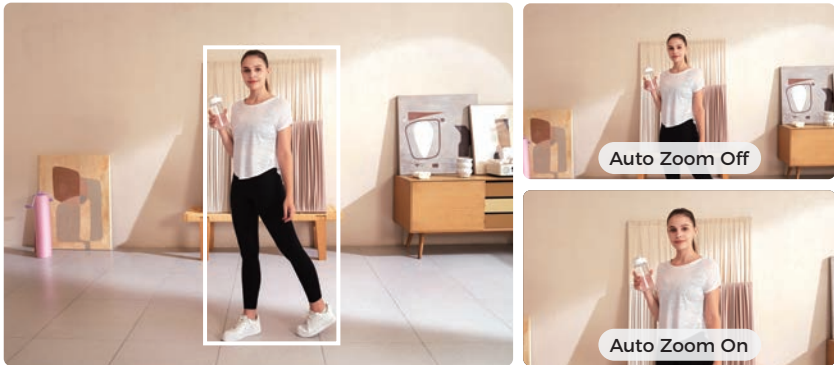
Online Education



Content Creation

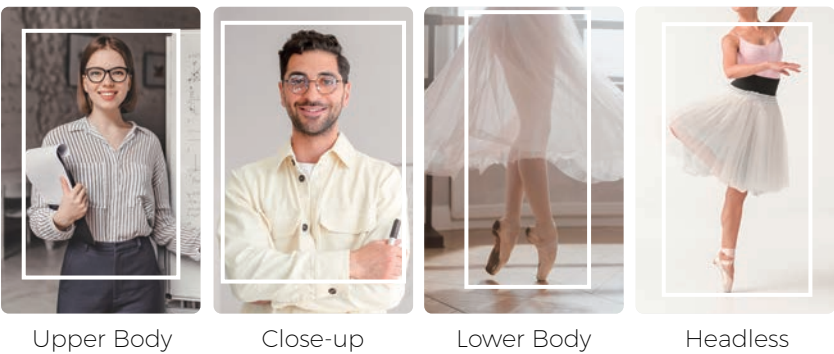
AI Auto Tracking with Auto Zoom

After generations of polishing OBSBOT's deep neural learning network algorithm, Tiny 2 Lite can track you in real time with improved AI Auto framing.



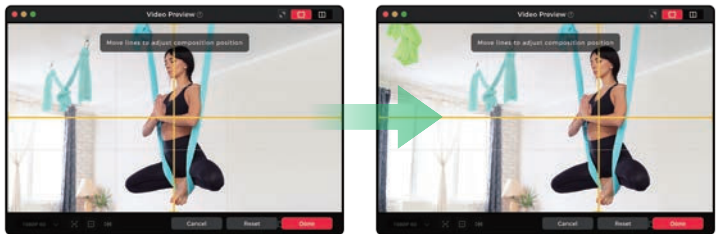
More Accurate Bodypart Tracking

For Tiny 2 Lite, the body part tracking focuses on upper body, close-up, lower body and headless. The iterative algorithms in this version offer improved accuracy and smoothness during tracking.



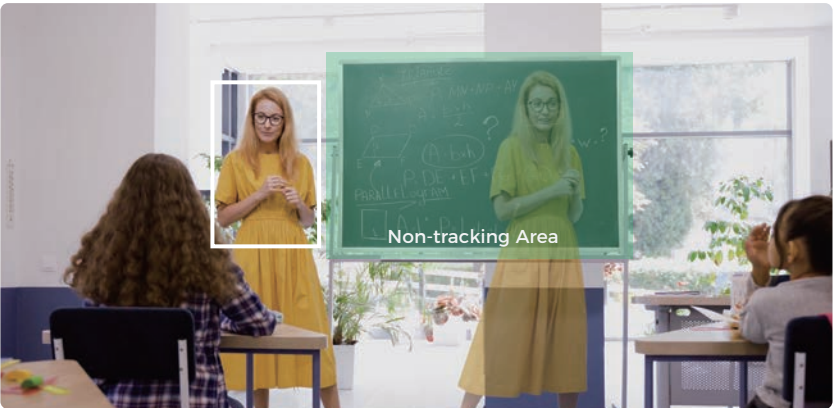
Frame with Customizable Composition Line

After activating AI Auto Tracking, easily adjust the line to reposition your subject within the frame. This feature allows for dynamic shot compositions beyond traditional center-framing, empowering you to create visually engaging content effortlessly.



Automate Your Flow with Zone Tracking

Support setting up Tracking Area and Non-tracking Area. Control tracking object freely within Tracking Area and fixed frame on the Non-tracking Area.



Be Productive with Preset Modes

With the new Preset Modes on Tiny 2 Lite, you can preset the PTZ and other settings like Tracking Modes, Image Parameters, and Background Blur. Setting these in advance can enhance your workflow's productivity.



Gesture Control 2.0 for More Efficiencies

Use Gesture Control 2.0 to streamline your workflow even from a distance. Three gestures are available for activating AI Auto Tracking and adjusting the Zoom in/out settings.



Zoom in/out



Lock/Unlock Target



Dynamic Zoom in/out

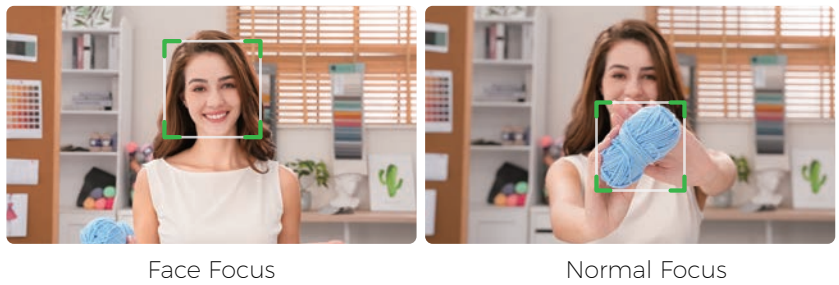
Budget-friendly Device in UHD 4K Clarity

Capture stunning moments in UHD 4K resolution. With up to 4K@30fps and 1080P@60fps, the Tiny 2 Lite is an excellent budget choice for capturing vivid details and memorable moments in your everyday life!



Precise, Deft Auto Focus

Tiny 2 Lite utilizes the advanced PDAF (Phase Detection Auto Focus) technology. This allows for a deft and accurate focus process by swiftly detecting the phase and moving the lens immediately to the focus point.



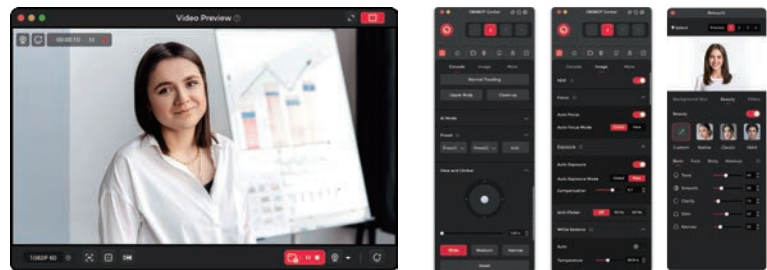
Reliable CMOS for Better Performance

Tiny 2 Lite's advanced 1/2" CMOS sensor gains amazing image signals and enables an obvious leap in image quality, offering reliable bright light performance with HDR and low light performance powered by optimized algorithm.



Expand Potential with OBSBOT Center

As one of the most productive control panels in the OBSBOT family, the inner potential of Tiny 2 Lite can be greatly expanded by OBSBOT Center includes PTZ control, Preset Modes setups, and more to explore.



Create OBSBOT Multi-Cam Setup

OBSBOT Center enables the control of 4 OBSBOT devices, allowing you to easily set up a streaming and content creation hub to fulfill the shooting scene from multiple angles.



Smart Control at your Fingertips

Tiny 2 Lite supports the O-type Laser Close-up. When Tiny 2 Lite detects the laser, it will zoom up the content by double-clicking the button on the Tiny Smart Remote 2, making your speech easier.



Your Voice, Focused and Super-clear

OBSBOT Tiny 2 Lite comes with a noise-cancelling dual-omnidirectional microphone, offering synchronized sound-image video calls and clear sound. With voice augmentation tech, the sound could be maintained well even in noisy environments.



Compatibility Makes Workflow Productive

With the support for the different tools, Tiny 2 Lite performs an impressive range of uses, which makes it a really productive webcam device for your workflow.



OSC



SDK



Stream Deck

Specification

Size & Weight

Dimensions: 48.37*46*64.2mm

Built-in Mount: 91.4g

Camera

Image Sensor: 1/2" CMOS

Effective Pixels: 48M

Aperture: f/1.8

FOV (D): 79.4 (4:3)

Supported Frame Rate

MJPEG: 3840x2160@[30 25 24 20 15], 1920x1080@

[60 50 30 25 24 20 15], 1280x720@[60 50 30 25 24 20 15]

YUV: 640x480@[30 25 24 20 15], 640x360@[30 25 24 20 15]

Zoom: 4x

Focus Type: PDAF/MF

HDR: Support

Gimbal Installation: Non-removable

Controllable Range:

Pan: ±140°; Tilt: 30°~ -70°

Mechanical Range:

Pan: ±150°; Tilt: ±90°

Max Controllable Speed: 120°/s

Audio

Audio Input: Built-in dual omni-directional mics with noise reduction

About OBSBOT

Connecting You to the Future

Founded in April 2016, OBSBOT, an artificial intelligence camera brand by REMO TECH, is dedicated to connecting people and the imaging industry to the future.

With artificial intelligence as the core, OBSBOT focuses on the application research of new technologies in the field of videography. It hopes to use revolutionary technology and innovative products to revolutionize the way public records and images are created, as well as to change people's social and educational ways.

80+

Licensed
Patents

160+

Patents
Pending

70+

Patents for
Invention

11

Licensed
Foreign Patents

Contact Us:

🔍 OBSBOT



Marketing collaboration: partnership@obsbot.com

Sales inquiry: distribution@obsbot.com

www.obsbot.com

OBSBOT

OBSBOT | TINY 2 LITE

AI-POWERED 4K PTZ WEBCAM

Stay Pro, Stay Productive



4K Resolution



AI Auto Tracking



Preset Modes



Gesture Control 2.0



Zone Tracking



Exclusive App